

# Maladies cardio-vasculaires et travail

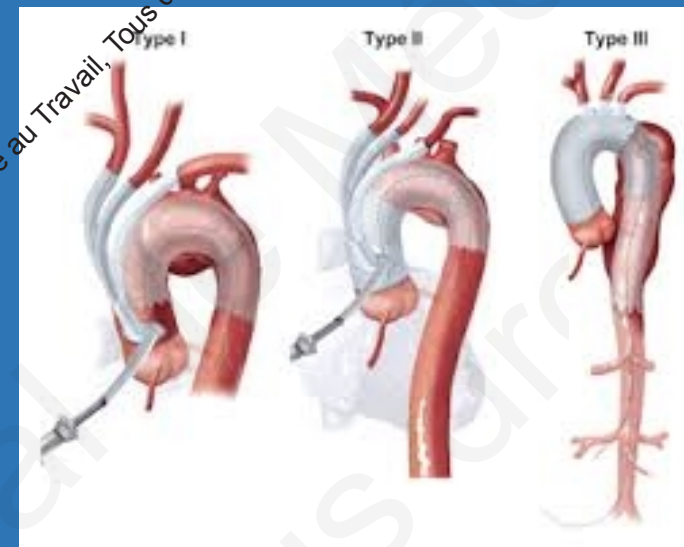
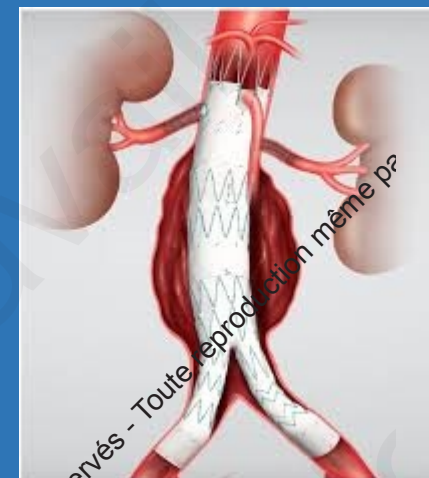
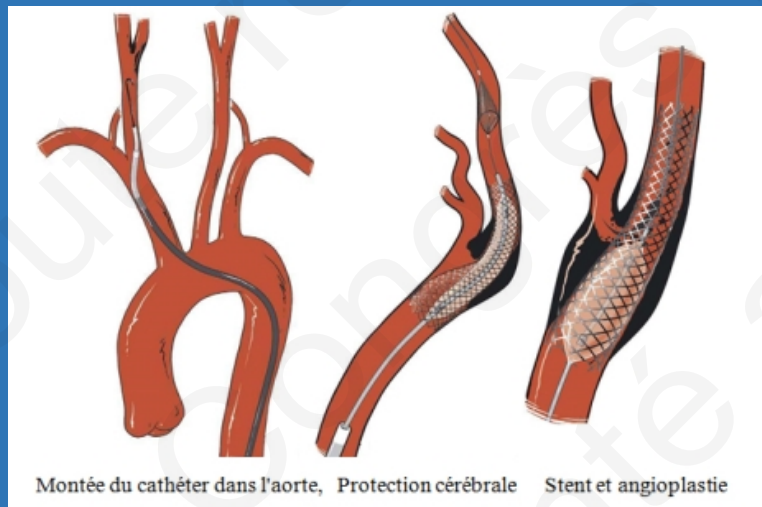
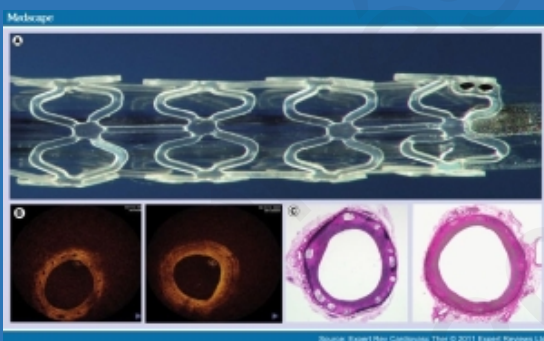
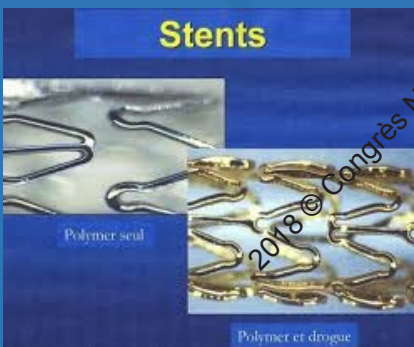
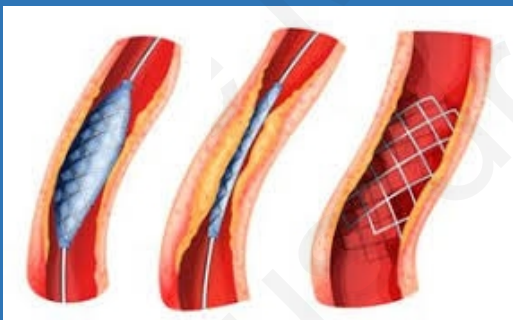
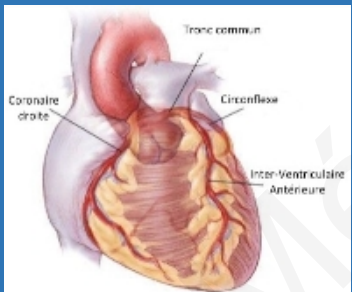
Pr FAGANELLI

Service de cardiologie

Hôpital NORD

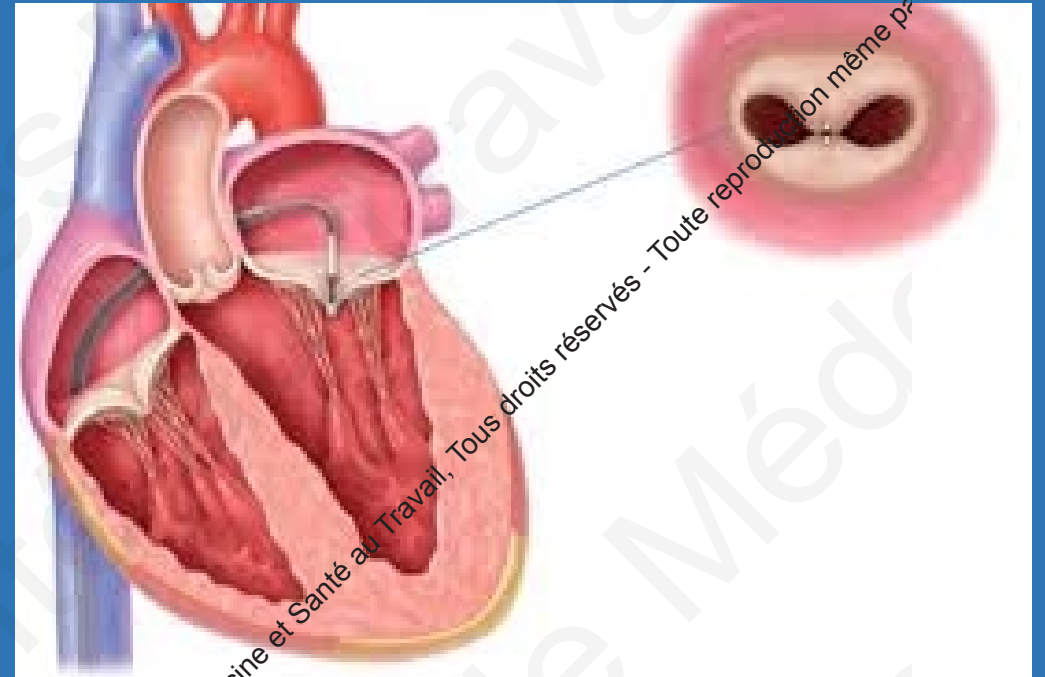
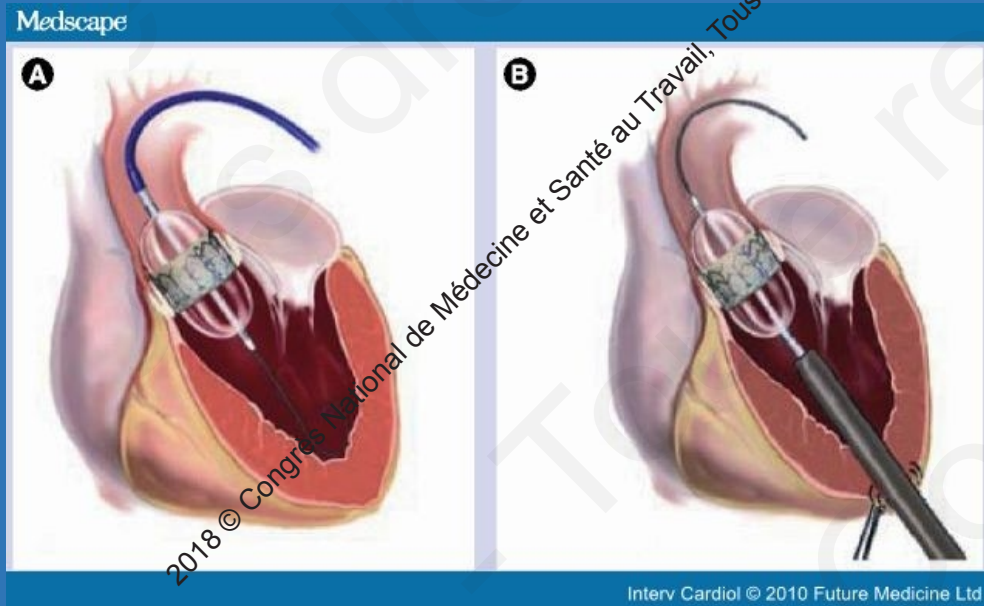
Marseille

# Pathologies vasculaires

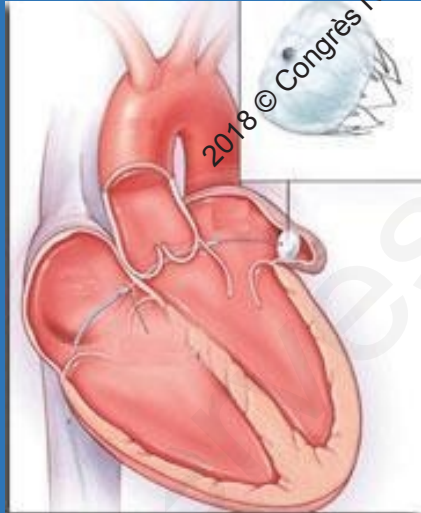
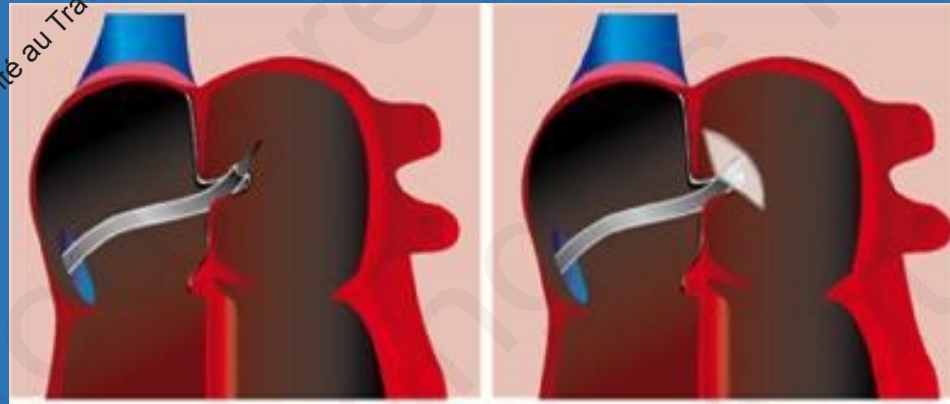


2018 © Congrès National de Médecine et Santé au Travail, Tous droits réservés - Toute reproduction même p?

# Pathologies valvulaires

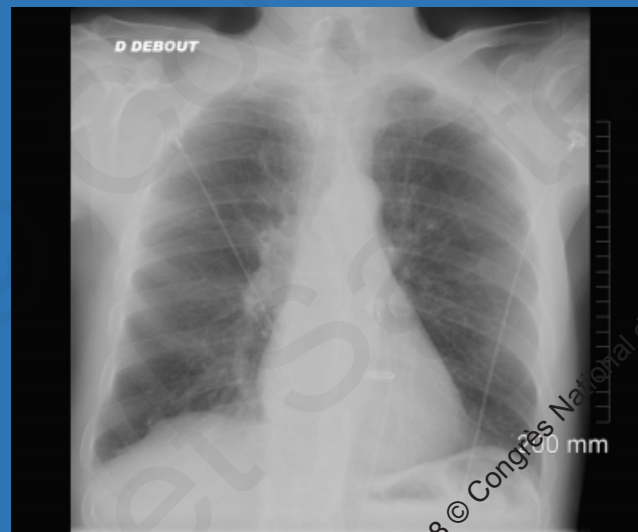
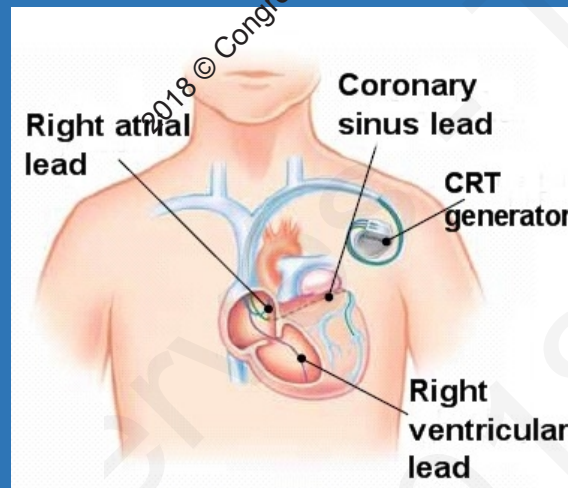
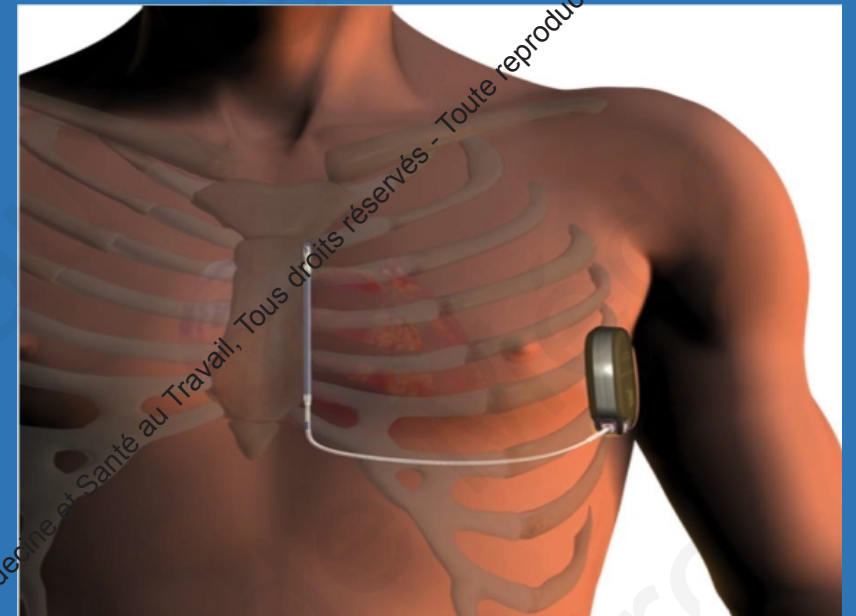
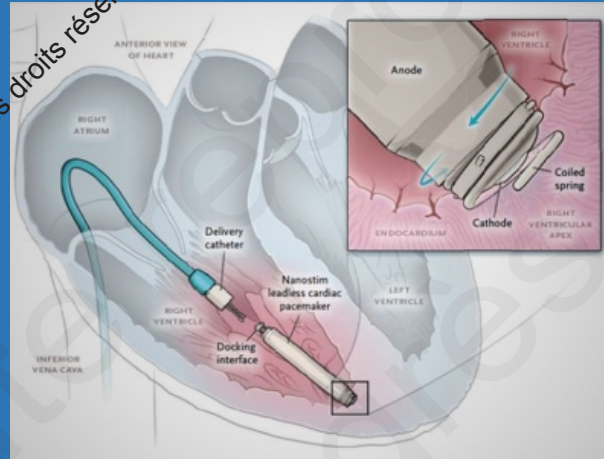
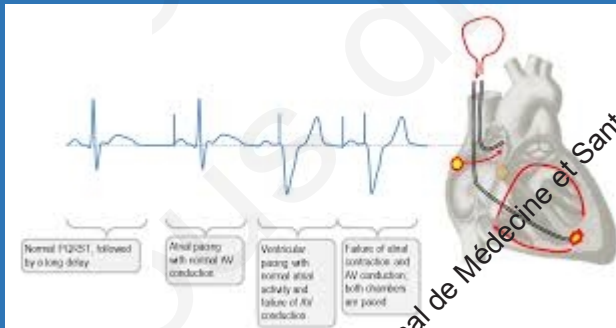


# Pathologie embolique

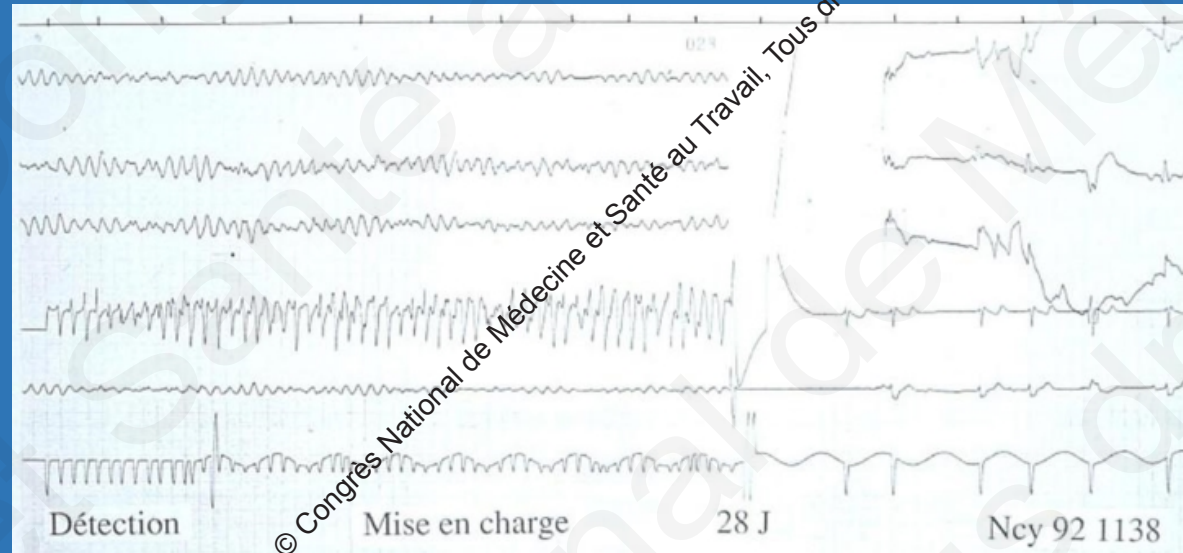
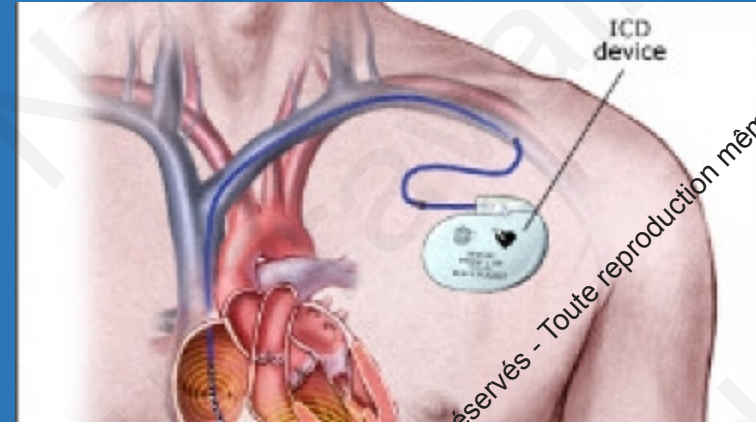
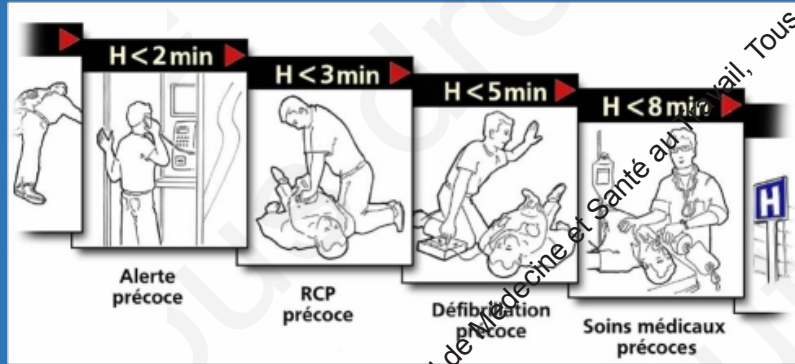




# La stimulation cardiaque



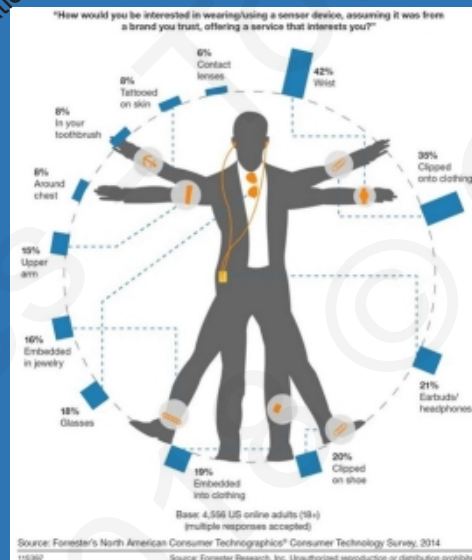
# La défibrillation ABCD



# Les médicaments

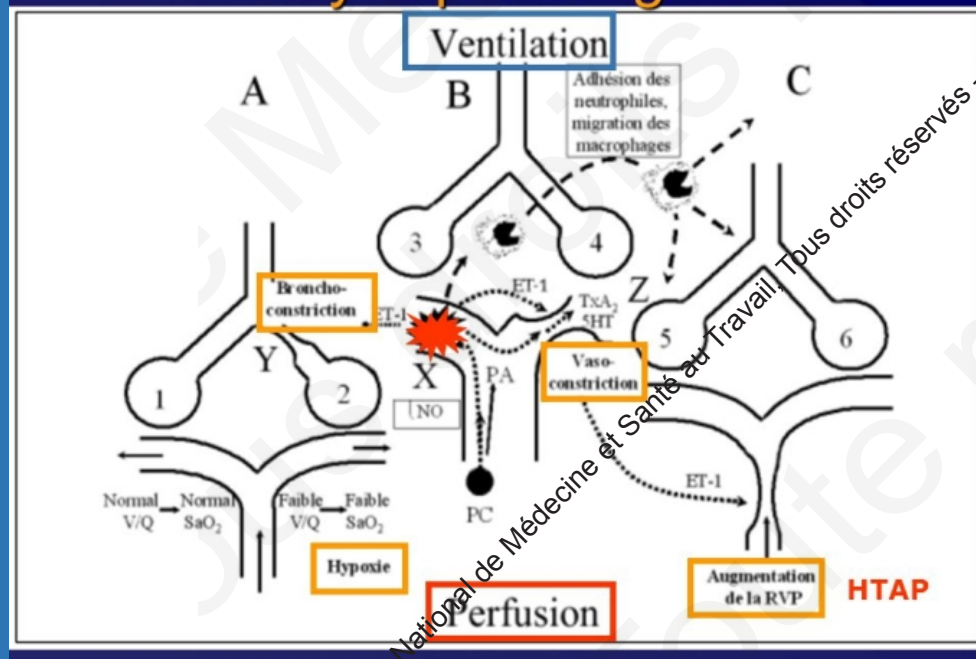
- Les combo : anti HTA, anti diabétique , anti agregant plaquettaires
- Bientôt: la polypills
  - 3 anti HTA
  - 1 statines
  - 1 AAP
  - 1 omega 3
  - Acide folique

# Le futur ..... La cardiologie connectée

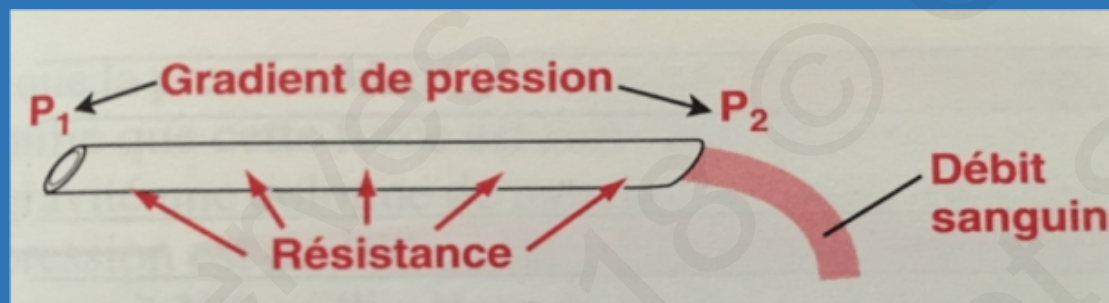




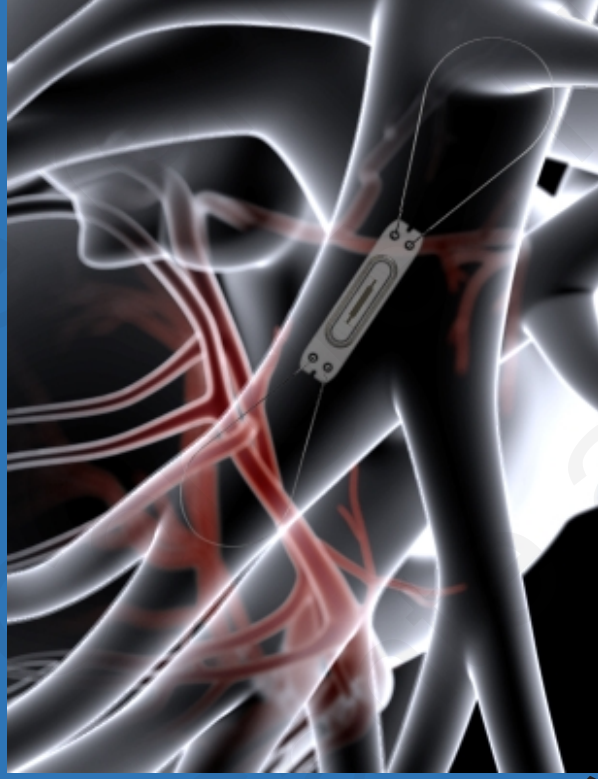
## Physiopathologie :



# Maintenant !!!!!!!!!



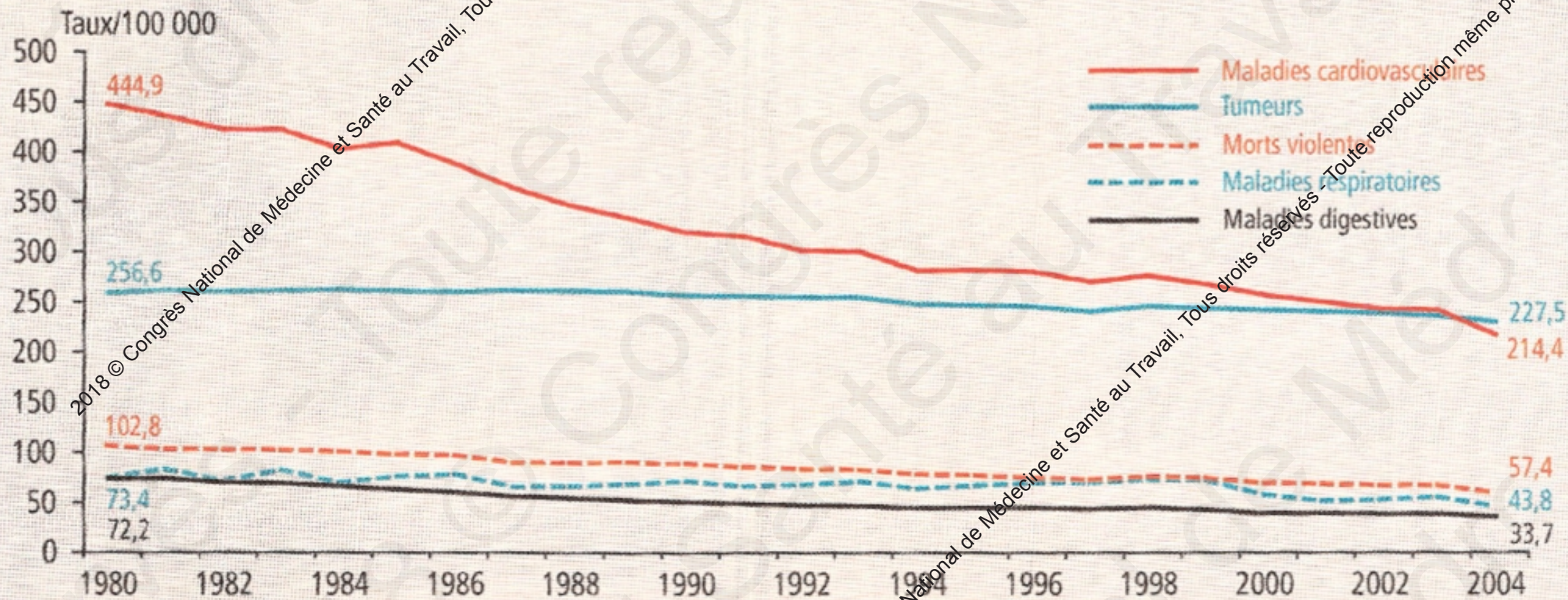
2018 © Congrès National de Médecine et Santé au Travail, Tous droits réservés - Toute reproduction même



2018 © Congrès National de Médecine et Santé au Travail, Tous droits réservés - Toute reproduction même p2



# Evolution des taux\* de décès par grande catégorie de causes de décès, 1980-2004, France métropolitaine, deux sexes / *Trends in death rates by main category of causes of death, 1980-2004, Metropolitan France, both sexes*



\* Taux de décès standardisés pour 100 000.